

第46回全日本クラブ対抗選手権大会



Oil Pattern Distance: 45 Feet **Reverse Brush Drop:** 45 Feet **Oil Per Board:** 50 uL
Forward Oil Total: 20.75 mL **Reverse Oil Total:** 14.7 mL **Volume Oil Total:** 35.45 mL
Forward Boards Crossed: 415 Boards **Reverse Boards Crossed:** 294 Boards **Total Boards Crossed:** 709 Boards

| | Start | Stop | Loads | Speed | Crossed | Start | End | Feet | T.Oil |
|---|-------|------|-------|-------|---------|-------|------|------|-------|
| 1 | 4L | 4R | 2 | 14 | 66 | 0.0 | 1.9 | 1.9 | 3300 |
| 2 | 5L | 5R | 3 | 14 | 93 | 1.9 | 7.8 | 5.9 | 4650 |
| 3 | 7L | 7R | 4 | 14 | 108 | 7.8 | 15.7 | 7.9 | 5400 |
| 4 | 10L | 10R | 3 | 14 | 63 | 15.7 | 21.6 | 5.9 | 3150 |
| 5 | 12L | 12R | 3 | 18 | 51 | 21.6 | 29.2 | 7.6 | 2550 |
| 6 | 12L | 12R | 2 | 18 | 34 | 29.2 | 34.3 | 5.1 | 1700 |
| 7 | 2L | 2R | 0 | 18 | 0 | 34.3 | 45.0 | 10.7 | 0 |

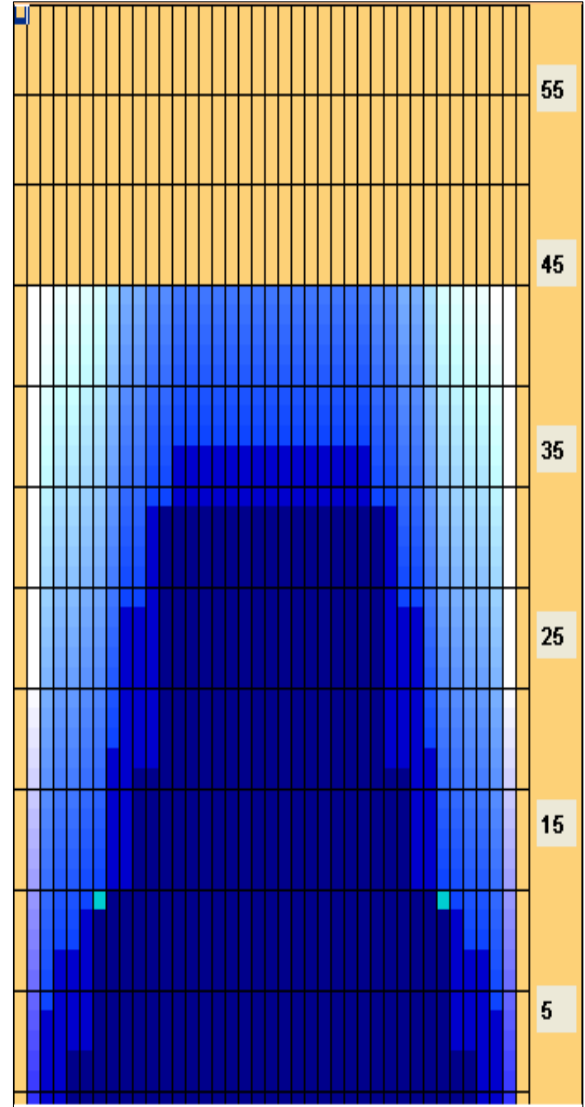
Navigation: Forward Reverse More

| | Start | Stop | Loads | Speed | Crossed | Start | End | Feet | T.Oil |
|---|-------|------|-------|-------|---------|-------|------|------|-------|
| 1 | 2L | 2R | 0 | 22 | 0 | 45.0 | 37.0 | -8.0 | 0 |
| 2 | 13L | 13R | 1 | 18 | 15 | 37.0 | 34.5 | -2.5 | 750 |
| 3 | 11L | 11R | 2 | 18 | 38 | 34.5 | 29.4 | -5.1 | 1900 |
| 4 | 9L | 9R | 3 | 18 | 69 | 29.4 | 21.8 | -7.6 | 3450 |
| 5 | 8L | 8R | 3 | 18 | 75 | 21.8 | 14.2 | -7.6 | 3750 |
| 6 | 6L | 6R | 1 | 18 | 29 | 14.2 | 11.7 | -2.5 | 1450 |
| 7 | 4L | 4R | 1 | 18 | 33 | 11.7 | 9.2 | -2.5 | 1650 |
| 8 | 3L | 3R | 1 | 18 | 35 | 9.2 | 6.7 | -2.5 | 1750 |
| 9 | 2L | 2R | 0 | 18 | 0 | 6.7 | 0.0 | -6.7 | 0 |

Navigation: Forward Reverse More

Conditioner:
 Type In or Select
 One
 TransferType:
 Type In or Select
 One

- Forward
- Reverse
- Combined
- Buff



| Item | 3L-7L:18L-18R | 8L-12L:18L-18R | 13L-17L:18L-18R | 18L-18R:17R-13R | 18L-18R:12R-8R | 18L-18R:7R-3R |
|------------------|----------------------|---------------------|---------------------|----------------------|---------------------|----------------------|
| Description | Outside Track:Middle | Middle Track:Middle | Inside Track:Middle | Middle: Inside Track | Middle:Middle Track | Middle:Outside Track |
| Track Zone Ratio | 4.53 | 1.38 | 1 | 1 | 1.38 | 4.53 |

